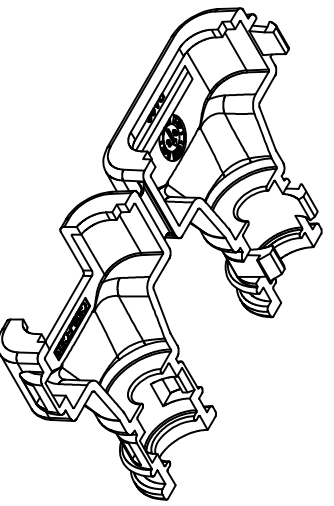
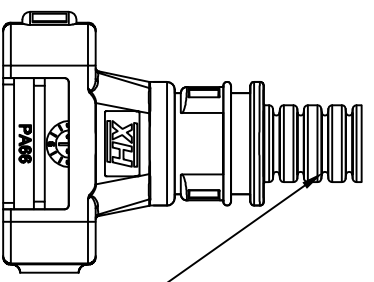
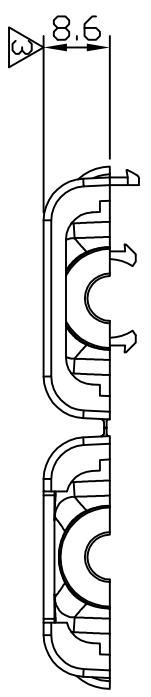
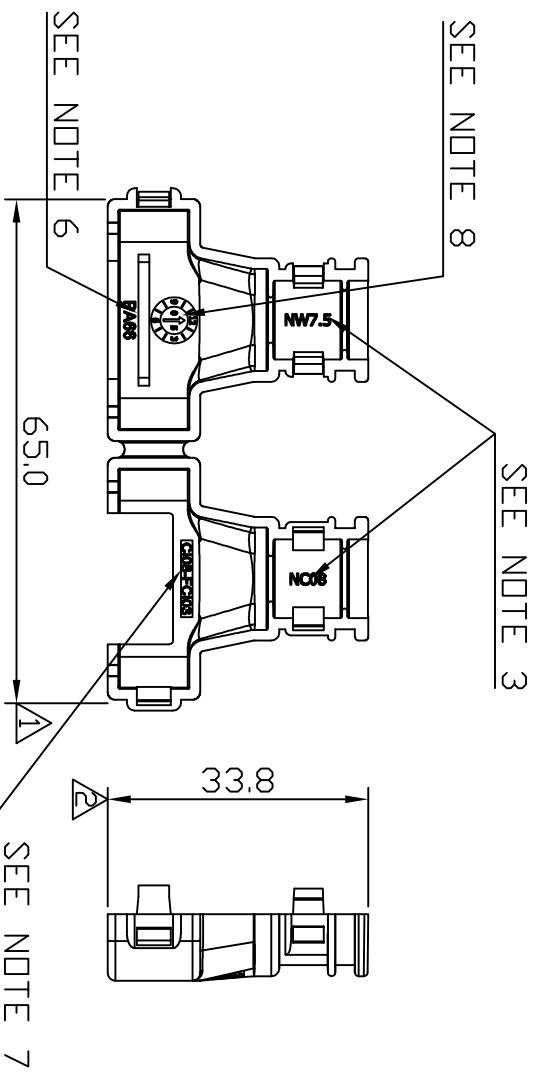


This drawing/document is a COPYRIGHT and the property of ADAPTAFLEX LIMITED. It must not be copied (in whole or part) used for manufacture or otherwise disclosed without prior written consent of the company.

THIRD ANGLE PROJECTION

IF IN DOUBT ASK



- NOTES
- 1.FOR FULL COMPONENT DETAILS SEE DRAWINGS HELD BY DESIGN DEPARTMENT.
  - 2.QUALITY CHECK DIMENSIONS INDICATED BY  $\nabla$  QUANTITY 4
  - 3.CHECK INTERNAL INSERT IDENTIFICATION 2 PLACES
  4. ASSEMBLE CONDUIT AS SHOWN AND CLOSE TO ENSURE CLIP INTEGRITY
  - 5.TEST HINGE BY FLEXING 10 TIMES TO EXTENTS  $\nabla$  OF MOVEMENT (WITHOUT LATCHING CLIPS) WITH NO BREAKAGE OF HINGE.
  - 6.CHECK MATERIAL REFERENCE - PA66
  - 7.CHECK PART IDENTITY C108-FCI03
  - 8.CHECK DATE CLOCK, YEAR AND MONTH
  - 9.FOR REGROUND LEVELS SEE : CD24
  - 10.FOR CONDITIONING REQUIREMENTS SEE : CD25

MANUFACTURING DRAWING



BIRMINGHAM ENGLAND

TITLE  
**C108-FCI03**

DRAWING NO. **4452** ISSUE **2**

|                           |                  |        |                      |          |       |
|---------------------------|------------------|--------|----------------------|----------|-------|
| MATERIAL                  | NYLON 66 - BLACK | NO     | MODIFICATIONS        | DATE     | INTLS |
| TOOL No.                  | AM169            | WEIGHT | 3.6g                 | $\nabla$ |       |
| GENERAL TOLERANCE         | $\pm 0.2$        | 1      | 3.6g WAS 3.7g (ISIR) | 15/07/05 | MB    |
| UNSPECIFIED RADII         | 0.1 TO 0.2       |        |                      |          |       |
| ALL DIMENSIONS            | IN MM            |        |                      |          |       |
| DO NOT SCALE FROM DRAWING |                  |        |                      |          |       |
| DRAWN BY                  | M. BUCK          |        |                      |          |       |
| APPROVED BY               |                  |        |                      |          |       |
|                           |                  |        |                      |          |       |
|                           |                  |        |                      |          |       |