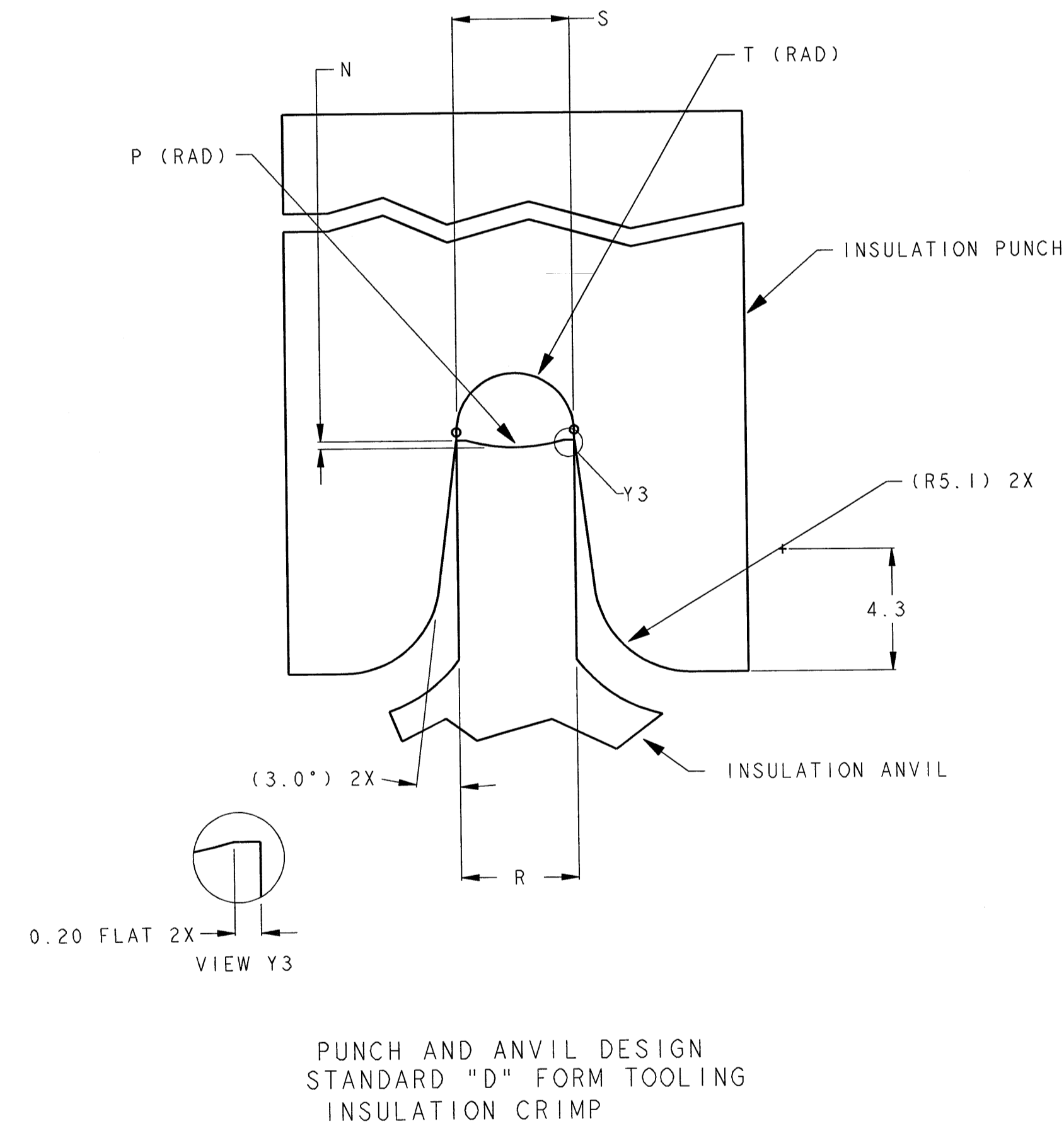
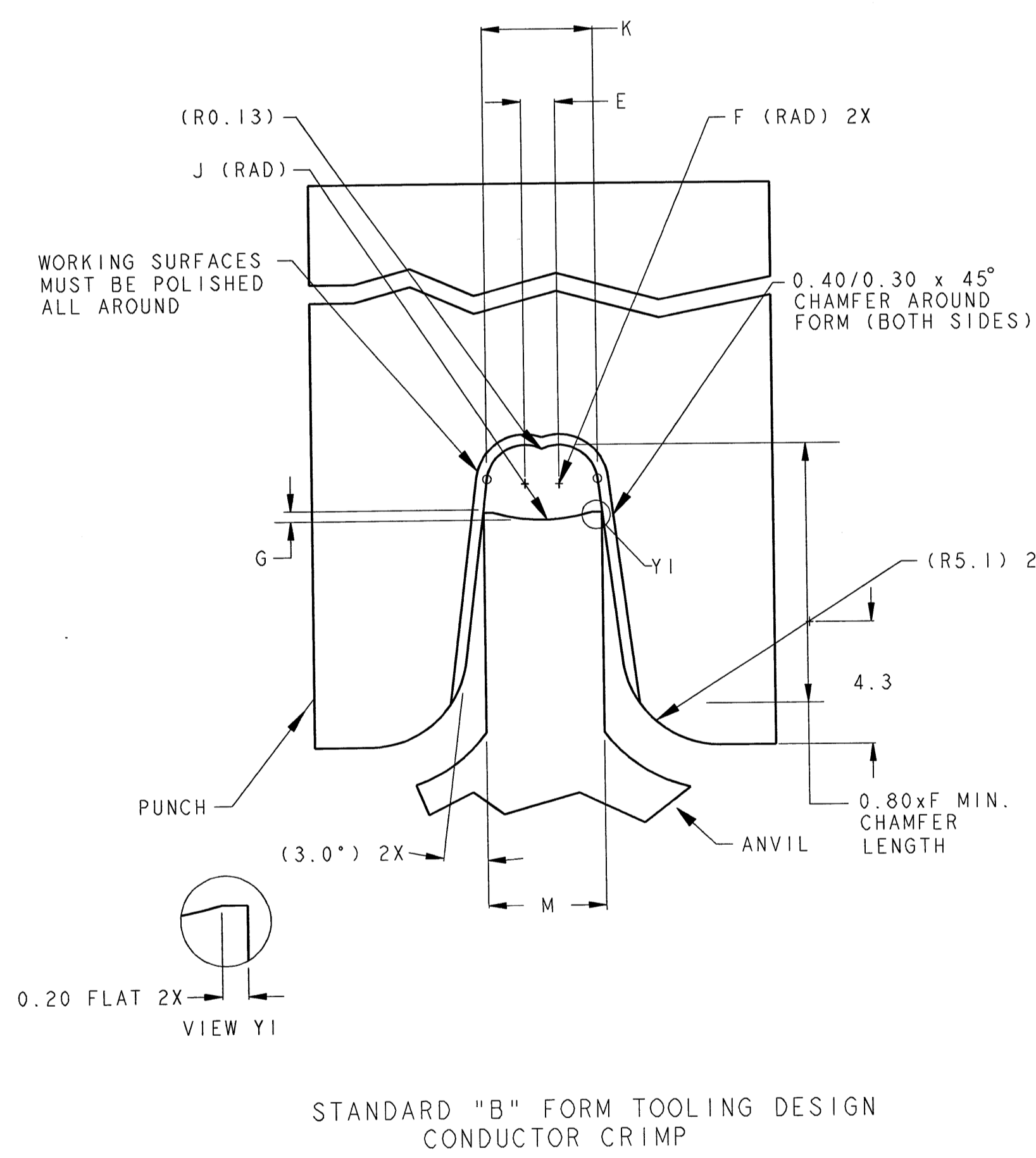
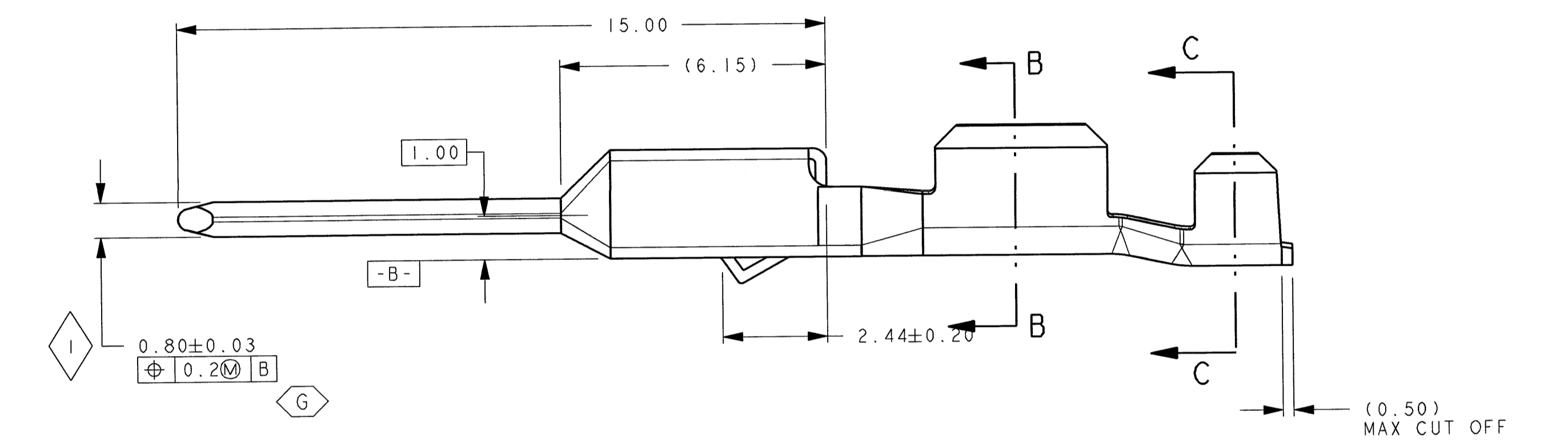
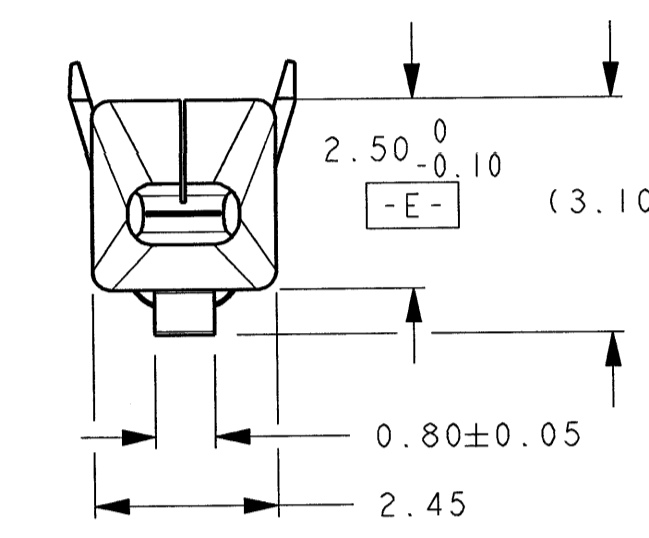
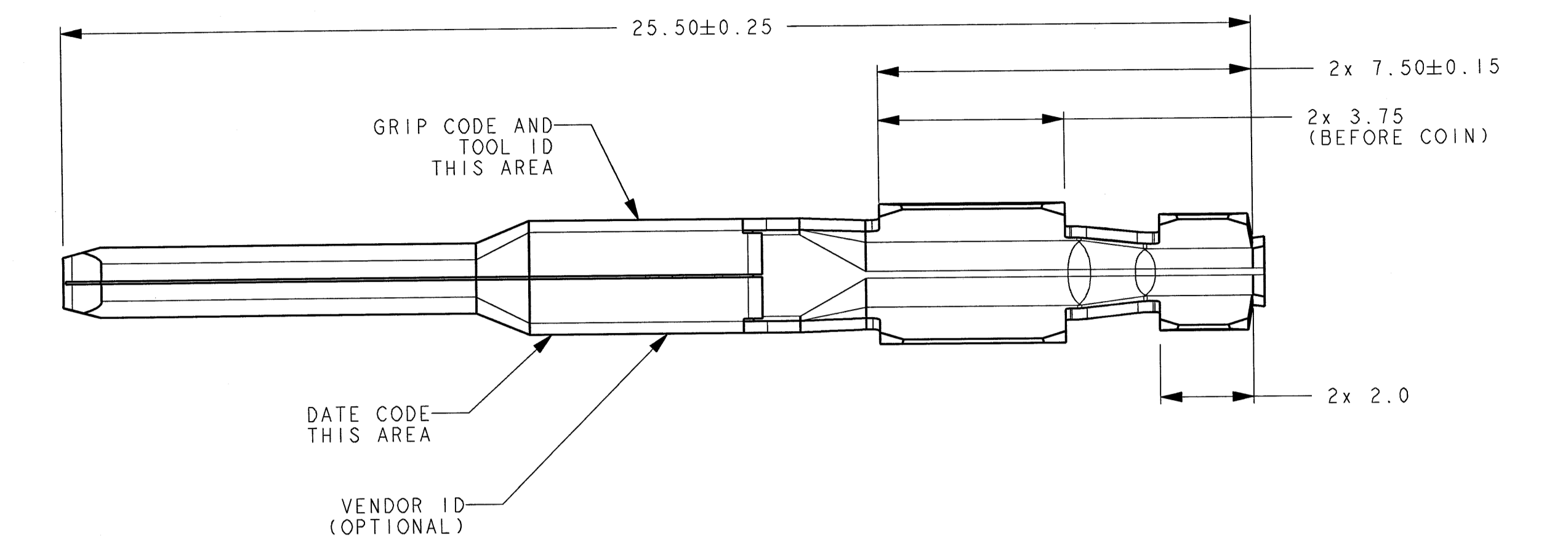
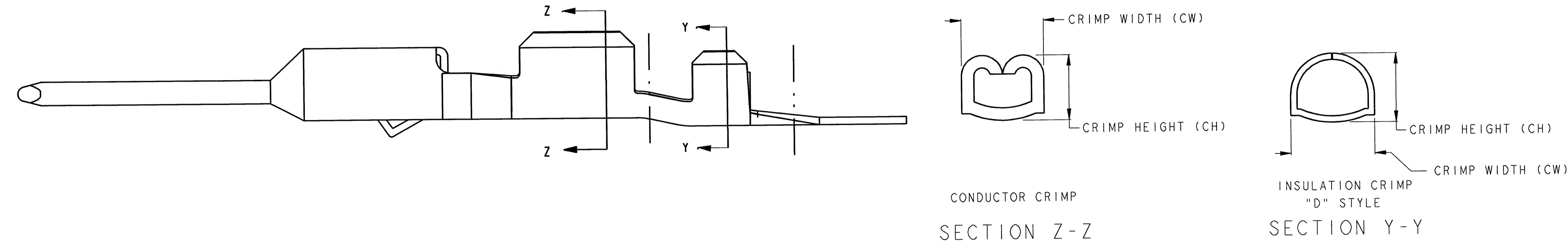
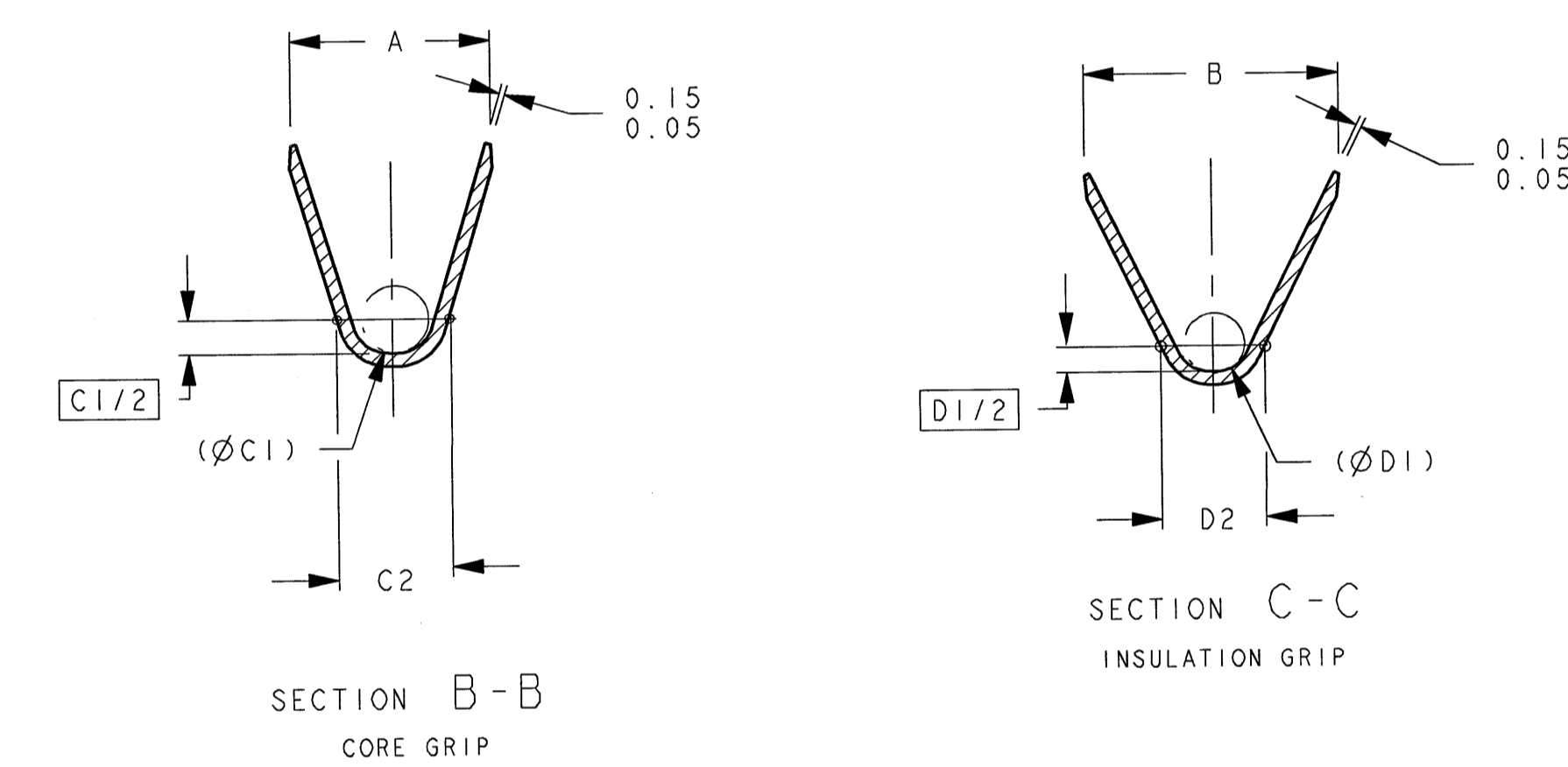


TABLE 1 - TERMINAL CRIMP DIMENSION (FOR REFERENCE ONLY)

SUPPLIER P/N TIN (MATERIAL 1)	SUPPLIER P/N GOLD - OPTION 1 (MATERIAL 2)	SUPPLIER P/N GOLD - OPTION 2 SHORTING BAR APPLICATIONS (MATERIAL 2)	GRIP CODE	WIRE SIZE	CONDUCTOR CH (SECT Z-Z, +/-0.05)	CONDUCTOR CW (SECT Z-Z, +/-0.10)	INSULATION CH (SECT Y-Y, +/-0.10)	INSULATION CW (SECT Y-Y, +/-0.10)
54001626	54001628	54001629	16	16	1.20	2.05	2.45	2.60
				18	1.15	2.05	2.15	2.60
				20	1.05	1.65	2.00	2.40
54002001	54002003	54002004	20	20	0.95	1.65	1.80	2.40
				22	0.95	1.65	1.80	2.40



CRIMP TOOL INFORMATION (REF. ONLY)



NOTES:

- 1) QUALITY ASSURANCE REQUIREMENTS
SPC DATA REQUIRED : 1
- 2) MUST COMPLY WITH ALL APPLICABLE REQUIREMENTS OF:
SAE/USCAR-2 REV 4
SAE/USCAR-12 REV 2
SAE/USCAR-21 REV 1
- 3) MATERIAL:
① TERMINAL BODY: 0.254 +/-0.008 C19400
100% ELECTROMATTE TIN PLATED
0.0012/0.0026 THICK
TENSILE STRENGTH: 379 - 483 MPa
YIELD STRENGTH: 379 MPa MIN
ELONGATION IN 51MM: 2% MIN
② TERMINAL BODY: 0.254 +/-0.008 C19400
CONTACT AREA - SELECTIVE GOLD PLATING
0.00076 THICK MINIMUM OVER NICKEL
0.0012/0.0026 THICK
OPTIONAL - SELECTIVE GOLD FLASH OVER
PALLADIUM 0.00051 MIN THICK OVER NICKEL
0.0012/0.0026 THICK
GRIP AREA - 100% ELECTROMATTE TIN PLATED
0.0012/0.0026 THICK
OPTIONAL - 100% ELECTROMATTE TIN PLATED
0.0012/0.0026 THICK OVER NICKEL FLASH
TENSILE STRENGTH: 379 - 483 MPa
YIELD STRENGTH: 379 MPa MIN
ELONGATION IN 51MM: 2% MIN
- 4) IT IS PERMISSIBLE TO PERFORM CONTINUOUS CONFORMANCE PER
FCI SPECIFICATION #AQA-001 INSTEAD OF ANNUAL LAYOUT AND
ANNUAL PV REQUIREMENTS OF QS-9000 SECTION 2
-CURRENT PRODUCTION TOOLING
-POINT OF LAST RUN
- 5) 1 PLACE DIM ±0.25
2 PLACE DIM ±0.1
ANGULAR DIM ±2°

TABLE 2 - TERMINAL GRIP / CRIMP TOOL DIMENSION TABLE (CRIMP TOOL DIMENSIONS (E-T) FOR REFERENCE ONLY)

GRIP CODE	WIRE SPECIFICATION	A	B	(ØC1)	C2	(ØD1)	D2	E+/-0.005	F+/-0.005	G+/-0.005	J+/-0.005	K+/-0.005	M+/-0.005	N+/-0.005	P+/-0.005	R+/-0.005	S+/-0.005	T+/-0.005
16	ESB-MIL123-A/ MS 8288	3.0	3.7	1.00	1.6	1.75	2.4	0.92	0.53	0.13	2.56	1.99	1.97	0.18	2.34	2.52	2.53	1.23
20	ESB-MIL123-A/ MS 8288	2.5	3.1	0.76	1.4	1.40	2.0	0.74	0.43	0.09	2.06	1.59	1.59	0.16	2.16	2.33	2.33	1.17

UNCONTROLLED
FCI AUTOMOTIVE
AUG - 4 2005
AMERICAS
FCI HANDED COPY
WHEN IN TYP

REV	DATE	BY	CHKD	APP'D	DESCRIPTION
1	07/03/06	E	14.17	0.15/0.05 COIN WAS 0.15+/-0.05	NO
2	07/11/06	D	P20	ADDED GOLD TERMINAL P/N'S	GDL
3	07/26/05	C1	-	000 RESOLUTION	LNC
4	04/21/05	C	-	INITIAL RELEASE	R.P.