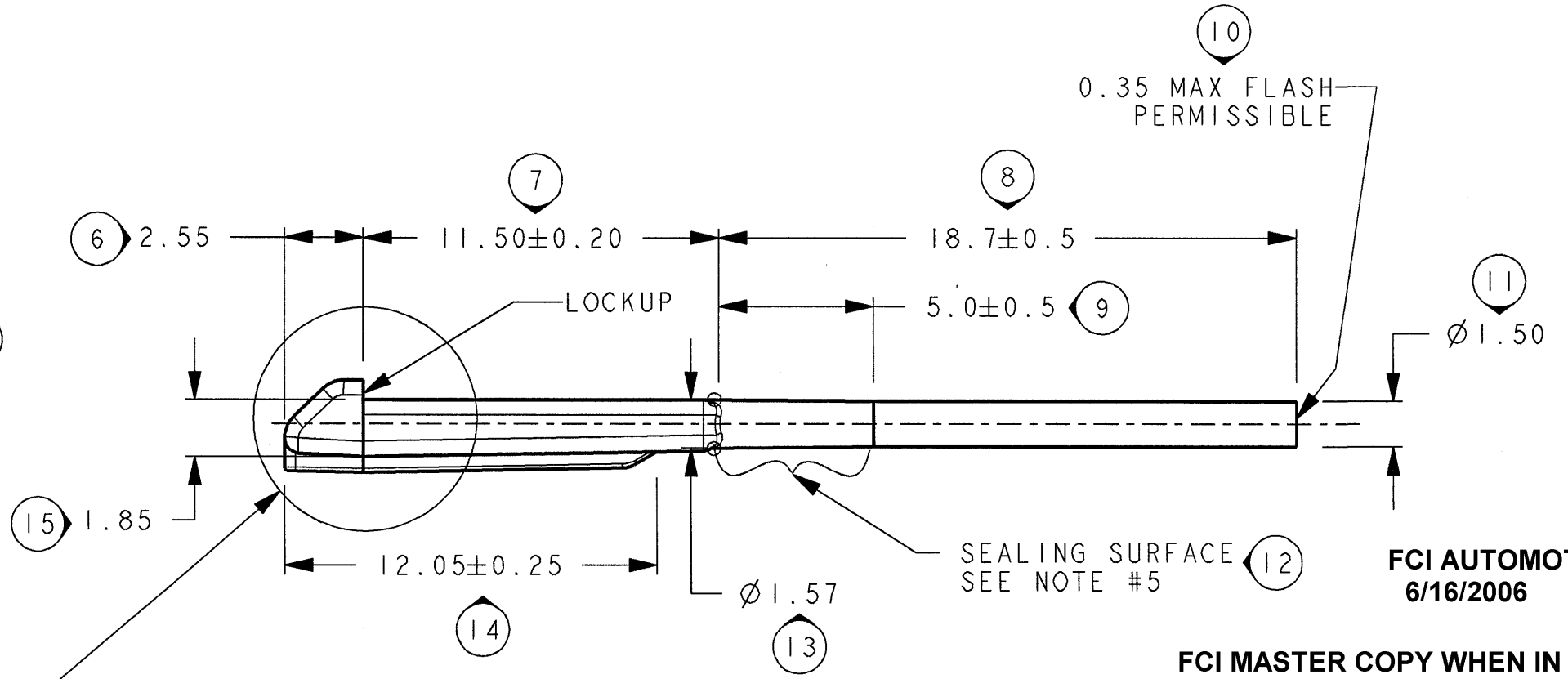
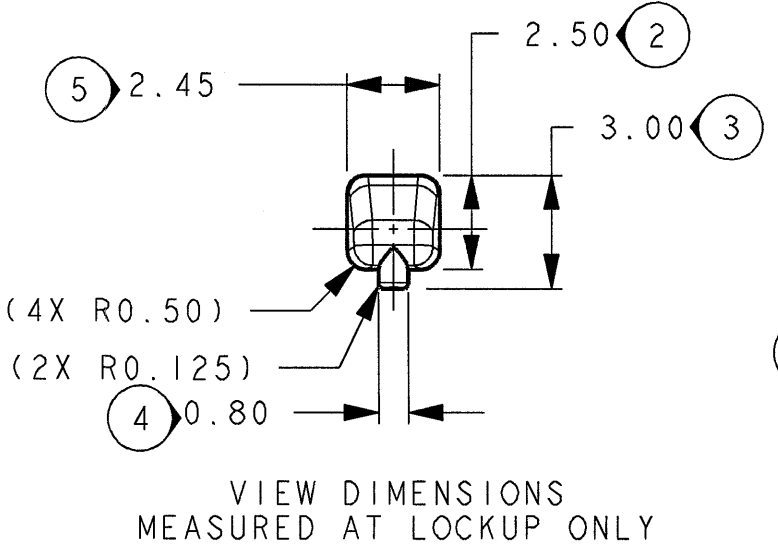
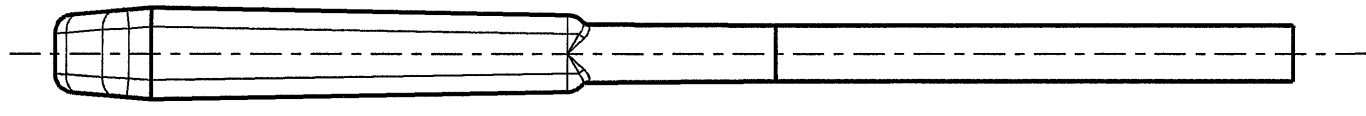
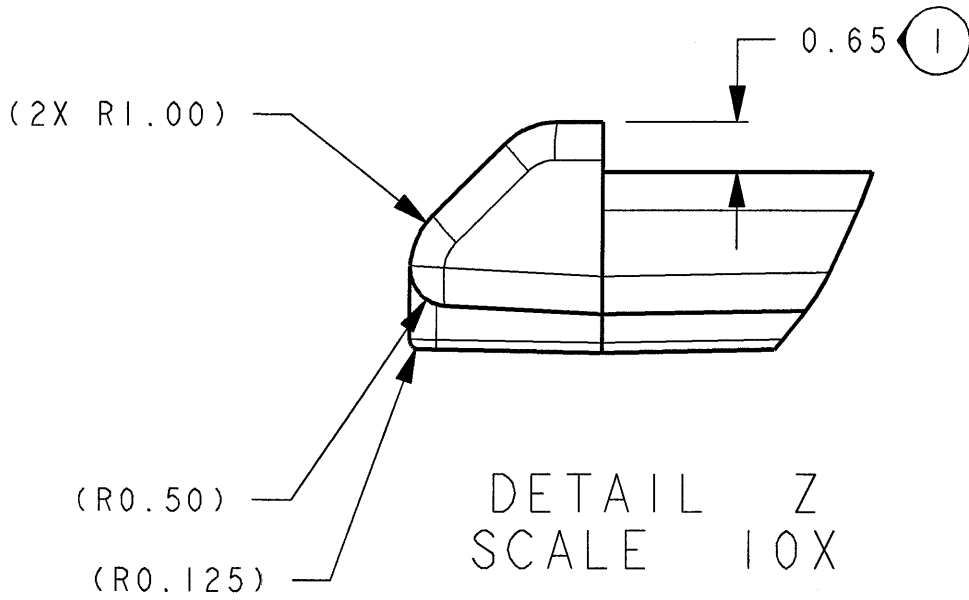
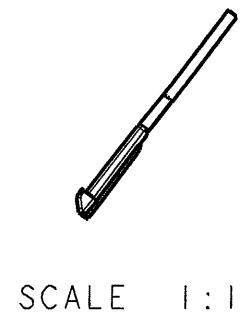


UNCONTROLLED



**FCI AUTOMOTIVE
6/16/2006**

FCI MASTER COPY WHEN IN RED

NOTES : UNLESS OTHERWISE SPECIFIED

- 16 1. DRAFT ANGLE PERMISSIBLE 5° MAXIMUM.
- 2. ALL DIMENSIONS SHOWN IN MILLIMETERS.
- 17 3. DIMENSIONS AND TOLERANCING PER ASME Y14.5M-1994.
- 18 4. RADII ON ALL CORNERS SHOWN SHARP OR ALL UNSPECIFIED RADII : 0.25 MAX EXCEPT AS NOTED.
- 19 5. SEALING SURFACE MUST BE W/O PARTING LINE, MISMATCH, OR GATES, ALL AROUND.
- 6. FCI P/N 54241629
- 7. QUALITY ASSURANCE REQUIREMENTS SPC DATA REQUIRED: (MOLD PROCESS PARAMETERS)

SEE DETAIL Z

8593	5-15-06	C	C5 E6	1.85 WAS 2.00 0.65 WAS 0.50	FAH	FAH	FAH
8281	04-19-06	B	C3 C1	18.7±0.5 WAS 15.0±0.3, Ø1.58 WAS Ø1.47 Ø1.50 WAS Ø1.27	FAH	FAH	FAH
			C5 E6	2.00 WAS 1.85 0.50 WAS 0.65			
			ALL NOTES	DIMENSION BALLOONS ADDED NOTE 4: 0.25 MAX WAS 0.25			
8095	10-19-05	A	ALL	RELEASED FOR PRODUCTION TOOLING	J.P.L.	FAH	FAH
ECN-NUMBER	DATE M-D-YY	REVISION	ZONE	CHANGE DESCRIPTION	DRAWN BY	CHK. BY	APPR. BY
PRODUCT SPEC.	PACKAGING SPEC.	APPLICATION SPEC.	THIS DRAWING AND ALL OTHER INFORMATION CONTAINED THEREIN IS PROPRIETARY AND THE PROPERTY OF FCI. This drawing may not be copied, reproduced or disclosed to any third party without the expressed written permission of FCI. © FCI April 1999				
TOLERANCES	XX ±0.10	MATERIAL :	BASF A3EG7 100Z REGRIND OR	SURFACE FINISH	CAD SYSTEM		
COUNTERPART NO.		COLOR :	NATURAL		3RD ANGLE pro / eng.		
DO NOT SCALE DRAWING	TOOL NO.	M410		ECO Loc. Code	DIMENSION IN MILLIMETERS		
				NA	A3		
DRAWN BY	DATE	NAME	TITLE		DRAWING NUMBER		
08-18-05	MAHADEVAN	UNIVERSAL SEAL PLUG. (APEX 150 TERMINAL SYSTEM)		K36013			
CHECKED BY	10/28/05	F HOLUB			SHEET		
APPROVED BY	10/28/05	F HOLUB	ESR NO.	CAT. NO.	FILE NAME	SCALE	
			AM-040219A-1		K36013	5:1	

P2F9