

DEVICE CONNECTORS

■ PCB Connectors

November 2018

PTCM with crimp connection

Building on our very successful PTSM connector line with spring termination, Phoenix Contact is pleased to now offer this product family with the option of crimped contacts. The new PTCM product line offers the same small footprint as the PTSM product line, but now with crimp contacts. The addition of crimped contacts allows for very quick wire terminations, allowing customers to make cost-effective cable assemblies with the new PTCM. The new PTCM is also 100 percent compatible with our PTSM series. Loose piece contacts can be crimped with the appropriate Phoenix Contact hand tools, and contacts on reel can be terminated quickly and easily with industry standard tooling. The Phoenix Contact hand tool is part number 1064998 which is the CRIMPFOX-P CC 0.75 L.

Features and benefits

- Cost-effective crimp connection for hand, semi-automatic, or automatic assembly
- Compatible with push-in PTSM family
- Manual and automatic crimp tools available
- Contacts are available on reel for automated efficiency
- Inverted options available
- Wire-to-board and wire-to-wire options

Technical data

- 6 A UL
- 160 V UL
- 26 AWG to 18 AWG
- 2.5-mm centerline
- 2 to 8 positions
- White color (RAL 9010)

Web codes

- #1611
- #1612

Industries

- Lighting
- Building automation
- Security and alarm
- Industrial controls



PTCM



Inverted PTCM

DEVICE CONNECTORS

PCB Connectors

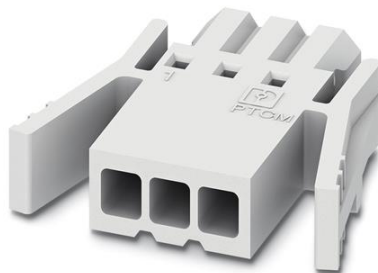
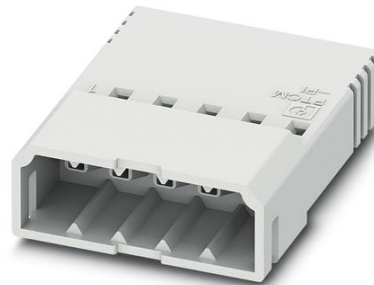


Pin

Socket

Crimp contacts			
Part number	Description	Wire range	Comments
1013778	PTCM-MP-P 0,14-0,5 R	26-20 AWG	Socket on reel
1013781	PTCM-MP-P 0,14-0,5	26-20 AWG	Socket, loose piece
1013988	PTCM-MP-PI 0,14-0,5 R	26-20 AWG	Pin on reel for inverted plug
1013990	PTCM-MP-PI 0,14-0,5	26-20 AWG	Pin, loose piece for inverted plug
1013777	PTCM-MP-P 0,34-0,75 R	22-18 AWG	Socket on reel
1013780	PTCM-MP-P 0,34-0,75	22-18 AWG	Socket, loose piece
1013987	PTCM-MP-PI 0,34-0,75 R	22-18 AWG	Pin on reel for inverted plug
1013989	PTCM-MP-PI 0,34-0,75	22-18 AWG	Pin, loose piece for inverted plug

Inverted plugs		
Part number	Description	Number of positions
1015242	PTCM 0,5/ 2-PI-2,5 WH	2
1015243	PTCM 0,5/ 3-PI-2,5 WH	3
1015244	PTCM 0,5/ 4-PI-2,5 WH	4
1015245	PTCM 0,5/ 5-PI-2,5 WH	5
1015246	PTCM 0,5/ 6-PI-2,5 WH	6
1015247	PTCM 0,5/ 7-PI-2,5 WH	7
1015248	PTCM 0,5/ 8-PI-2,5 WH	8



Plugs with latches		
Part number	Description	Number of positions
1015464	PTCM 0,5/ 2-PL-2,5 WH	2
1015463	PTCM 0,5/ 3-PL-2,5 WH	3
1015462	PTCM 0,5/ 4-PL-2,5 WH	4
1015461	PTCM 0,5/ 5-PL-2,5 WH	5
1015460	PTCM 0,5/ 6-PL-2,5 WH	6
1015459	PTCM 0,5/ 7-PL-2,5 WH	7
1015458	PTCM 0,5/ 8-PL-2,5 WH	8