



Simplify field servicing of LED lighting applications with push-button type LED Array Holders from Molex that enable easy wire insertion and removal without the need for an extraction tool

Features and Benefits

User-friendly push-button wire-removal method

Provides simple removal of power-source wires for field servicing without the need of an extraction tool

Accepts 13.50, 14.50 and 19.00mm diameter Light Emitting Surface (LES) type arrays

Meets customer specific requirements

3.0A current

Meets power requirements for increased luminosity

Follows Zhaga Book 3 key mechanical standards

Promotes standardization with existing LED eco-system; allows manufacturers to upgrade without re-designing their products

LED COB pre-hold feature

Minimizes installation time by allowing LED array to be secured to the holder prior to final assembly

One-piece design

Simplifies assembly

Markets and Applications

All general illumination applications

- Down Lighting
- Spotlighting

Outdoor lighting

- Roadways
- Parking Lots
- Wall Packs



Recessed down lighting in residential and commercial buildings



Outdoor area lighting in parking lots

Specifications

REFERENCE INFORMATION

Packaging: Tray
Use With: Solid and Stranded Wire
Designed In: Millimeters
RoHS: Yes
Halogen Free: Yes
Glow Wire Compliant: No

ELECTRICAL

Voltage (max.): 250V
Current (max.): 3.0A
Contact Resistance:
30 milliohms max.
Dielectric Withstanding Voltage:
1,500VAC
Insulation Resistance:
500 Megaohms min

MECHANICAL

Wire Insertion Force: 10N max.
Wire Retention Force: 20N min.
Durability (min.): 25 cycles

PHYSICAL

Housing: PBT, UL 94V-0
Contact: Copper Alloy
Plating:
Contact Area — Tin
Operating Temperature:
-40 to + 105°C

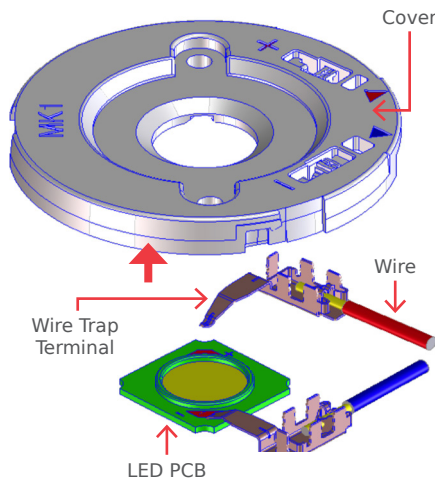
LED Array Holders, Wire Trap, Push-Button Type

for Samsung LC013B (13.50mm LES Diameter) LC019B (14.50mm), and LC026B, LC033B and LC040B (19.00mm LES Diameter) Arrays



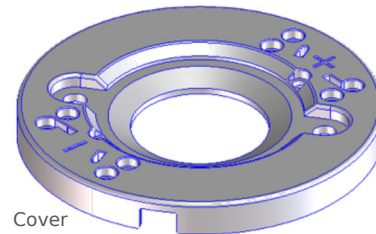
Additional Product Features

One-Piece Mold Type Simplifies Assembly

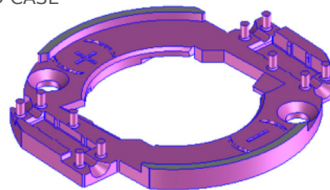


Molex one-piece design

Competitive two-piece mold types



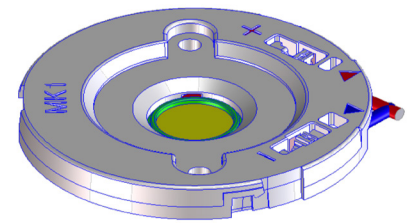
LED CASE



Competitive two-piece design

LED Array Holders, Wire Trap, Push-Button Type

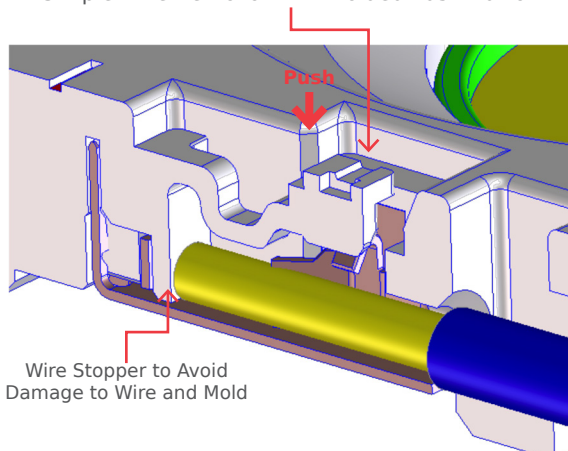
for Samsung LC013B (13.50mm LES Diameter) LC019B (14.50mm), and LC026B, LC033B and LC040B (19.00mm LES Diameter) Arrays



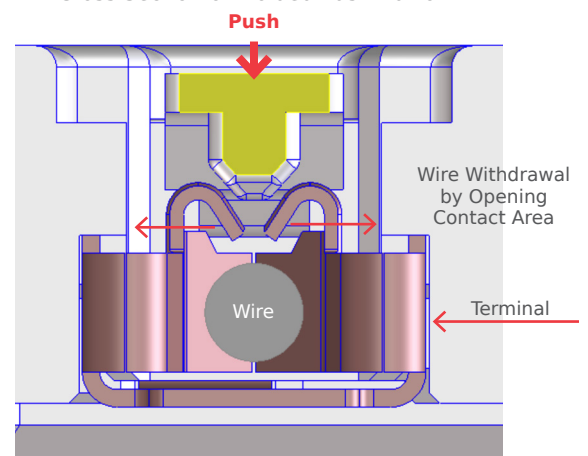
Molex version assembled

Easy Wire Insertion and Removal Without The Need for an Extraction Tool

Simple Wire Removal with Molded Push Button



Cross Section of Molded Push Button



Ordering Information

Order No.	Lamp Diameter
104228-0210	13.50mm
104328-0210	14.50mm
104229-0210	19.00mm