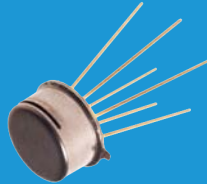
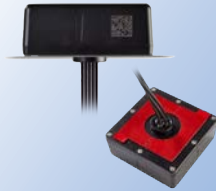




The IP&E
Specialist

Commercial Components



Premier Suppliers

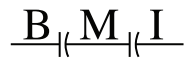
In Stock and
Available to Sell



Reach your local
TTI Specialist at
1.800.CALL.TTI

tti.com





Keeping business running smoothly and at top efficiency with today's data and technology demands requires the widest and deepest inventory of high-quality, high-performance components. And TTI stocks them.

Featuring the most comprehensive passive, connector, discrete semiconductor and electromechanical inventory from more than 70 industry-leading manufacturers, TTI delivers the right part at the right time—every time—to keep you up to date, up to speed and ahead of the rest.



The Electronic Component Specialists

When it comes to IP&E and discrete components, TTI is your go-to resource with the broadest and deepest inventory and a reputation for quality and on-time delivery second to none.

Ask your TTI Sales Specialist about our Online Procurement programs – the quick and easy way to order components online using your terms account, see the status of your orders, upload your BOM and do it all with secure 24/7 access.

3M Interconnect Solutions

Abracon

AirBorn Interconnects

Amphenol

- Amphenol Advanced Sensors
- Amphenol Aerospace
- Amphenol Alden
- Amphenol All Sensors
- Amphenol Canada
- Amphenol Communications Solutions
- Amphenol Connex
- Amphenol CONEC
- Amphenol Entertainment
- Amphenol FCI
- Amphenol Fiber Optics
- Amphenol Industrial
- Amphenol Matrix
- Amphenol Mobile Consumer Products
- Amphenol Nexus
- Amphenol Pcd
- Amphenol Piher Sensing Systems
- Amphenol Positronic
- Amphenol RF
- Amphenol SGX Technology
- Amphenol Sine
- Amphenol Spectra Strip
- Amphenol SSI Technology
- Amphenol SV Microwave
- Amphenol TCS
- Amphenol Tuchel

ams

- OSRAM

Aptiv (formerly Delphi)

Barker Microfarads (BMI)

Bourns

- J.W. Miller
- Keko-Varicon
- Komatsulite
- Transtek

Carlisle Interconnect Technologies

- Tri-Star

Chemi-Con

Conesys

- Aero Electric
- J-Tech

Cree LED

Cornell Dubilier (CDE)

- Aerovox
- Illinois Capacitor

Dearborn Electronics

Delevan

Delta Electronics Manufacturing

Dialight

EATON

- Bussmann Electronics
- Souriau-Sunbank
- Transportation and eMobility

Electrical Components International (formerly Fargo Assembly)

- DillBlox®

Glenair

HARTING

Harwin

HellermannTyton

Honeywell

INCON Inc.

iNRCORE

- Gowanda
- Vanguard

ITT Cannon

KEMET (YAGEO Group)

- Arcotronics
- Evov Rifa
- Forest Electric (FELCO)
- NEC TOKIN

Kingbright

Knowles

- Dielectric Labs (DLI)
- IMC
- Novacap
- Syfer
- Voltronics

KOA Speer

KOSTAL

KYOCERA AVX

- ATC
- Elco
- Ethertronics

KYOCERA Display

Laird Performance Materials

Lear Corporation

Littelfuse

- C&K Components
- Carling Technologies
- Hamlin
- Hartland Controls
- IXYS
- Littelfuse Automotive
- Teccor
- US SENSOR

Meder (Standex)

Molex

- AFFINITY MEDICAL
- BittWare
- Brad
- FCT
- Flamar
- GW Connect
- ISI
- Laird CVS
- Nistica
- OPLINK
- Philips Medisize
- Polymicro Technologies
- PROTEK
- SDP Telecom
- Sensorcon
- Soligie
- SST
- Temp-Flex
- TRITON
- Woodhead

Motherson (formerly PKC Group)

Murata

- Murata Power Solutions (MPS)

Nexperia

Nichicon

NKK Switches

OHMITE

- Arcol

OMRON

- OMRON Automation & Safety
- OMRON Electronic Components

OSRAM Opto Semiconductor (ams)

Panasonic

- Aromat
- Sanyo

Panduit

PANJIT

Phoenix Contact

Preci-Dip

Pulse

Qualcomm

- RF360

ROHM Semiconductor

Sensata

- Airpax
- BEI Sensors
- Crydom
- Cynergy3
- Gigavac
- Kavlico
- Sensor Solutions

Smiths Interconnect

- Hypertac
- IDI
- Sabritec

Spectrum Control (formerly APITech)

Standex Electronics

Sumitomo Wiring Systems

Switchcraft Conxall

TAIYO YUDEN

TDK

- EPCOS

TE Connectivity

- Agastat
- Alcoswitch
- AMP
- Augat
- Axicom
- CII Technologies
- Corcom
- DEUTSCH
- Elcon
- ERNI
- Hartman
- HTS
- Kemtron
- Kilovac
- Laird Antennas
- Madison Cable
- Measurement Specialties
- Microdot
- Nanonics
- OEG

- Potter & Brumfield
- Products Unlimited
- Raychem
- Schrack
- Seacon

Toshiba

TT Electronics

- BI Technologies
- IRC
- OPTEK
- Semelab
- Welwyn

Vanguard Electronics

Vishay

- Angstrohm
- Barry Industries
- BCcomponents
- Beyschlag
- Cera-Mite
- Dale
- Draloric
- Electro-Films
- Huntington/Milwaukee
- Roederstein
- Semiconductors
- Sfernice
- Siliconix
- Spectrol
- Sprague
- Tansitor
- Techno
- Thin Film
- Vitramon

VPF Foil Resistors

VPT Components

WIMA

YAGEO Group

- KEMET
- Pulse

Yazaki

FILM	Bourns	KOA Speer	OHMITE	Panasonic	TE Connectivity	TT Electronics - IRC, Welwyn	Vishay	Vishay - Dale	Vishay - Sfernice	Vishay - Thin Film	Vishay Precision Group	YAGEO
METAL FILM												
Discrete Chip			◆	◆	◆	◆	◆	◆	◆	◆	◆	◆
Flame Proof	◆	◆	◆	◆	◆	◆	◆	◆	◆	◆	◆	◆
Fusible	◆	◆	◆	◆	◆	◆	◆	◆	◆	◆	◆	◆
High-Temp	◆	◆	◆	◆	◆	◆	◆	◆	◆	◆	◆	◆
High-Voltage	◆	◆	◆	◆	◆	◆	◆	◆	◆	◆	◆	◆
Matched Sets			◆	◆	◆	◆	◆	◆	◆	◆	◆	◆
Melf/Cylindrical		◆		◆	◆	◆	◆	◆	◆	◆	◆	◆
Metal Film	◆	◆	◆	◆	◆	◆	◆	◆	◆	◆	◆	◆
Metal Glaze		◆	◆	◆	◆	◆	◆	◆	◆	◆	◆	◆
Metal Oxide		◆	◆	◆	◆	◆	◆	◆	◆	◆	◆	◆
Precision	◆	◆	◆	◆	◆	◆	◆	◆	◆	◆	◆	◆
Thick Film Chip	◆	◆	◆	◆	◆	◆	◆	◆	◆	◆	◆	◆
Thin Film Chip	◆	◆	◆	◆	◆	◆	◆	◆	◆	◆	◆	◆
Trimmable				◆	◆	◆	◆	◆	◆	◆	◆	◆
Voltage Divider	◆	◆		◆	◆	◆	◆	◆	◆	◆	◆	◆

POWER WIREWOUND CARBON & FOIL	Bourns	EATON	KOA Speer	OHMITE	Panasonic	TE Connectivity	TT Electronics - IRC, Welwyn	Vishay	Vishay - Dale	Vishay - Huntington/ Milwaukee	Vishay - Sfernice	Vishay Precision Group	YAGEO
POWER/WIREWOUND													
Brackets/Hardware			◆	◆	◆	◆	◆	◆	◆	◆	◆	◆	◆
Ceramic Composition			◆	◆	◆	◆	◆	◆	◆	◆	◆	◆	◆
Commercial	◆		◆	◆	◆	◆	◆	◆	◆	◆	◆	◆	◆
Current Sense/ Low Resistance	◆	◆	◆	◆	◆	◆	◆	◆	◆	◆	◆	◆	◆
Grid			◆					◆	◆	◆	◆	◆	◆
Industrial	◆		◆	◆	◆	◆	◆	◆	◆	◆	◆	◆	◆
Precision			◆	◆	◆	◆	◆	◆	◆	◆	◆	◆	◆
Rheostat			◆	◆	◆	◆	◆	◆	◆	◆	◆	◆	◆
Special Purpose		◆	◆	◆	◆	◆	◆	◆	◆	◆	◆	◆	◆
Tubular			◆	◆	◆	◆	◆	◆	◆	◆	◆	◆	◆
Vitreous Enamel			◆					◆	◆	◆	◆	◆	◆

CARBON	Bourns	EATON	KOA Speer	OHMITE	Panasonic	TE Connectivity	TT Electronics - IRC, Welwyn	Vishay	Vishay - Dale	Vishay - Sfernice	Vishay - Thin Film	Vishay Precision Group	YAGEO
FOIL													
Carbon Composition			◆		◆	◆	◆	◆	◆	◆	◆	◆	◆
Carbon Film			◆	◆	◆	◆	◆	◆	◆	◆	◆	◆	◆

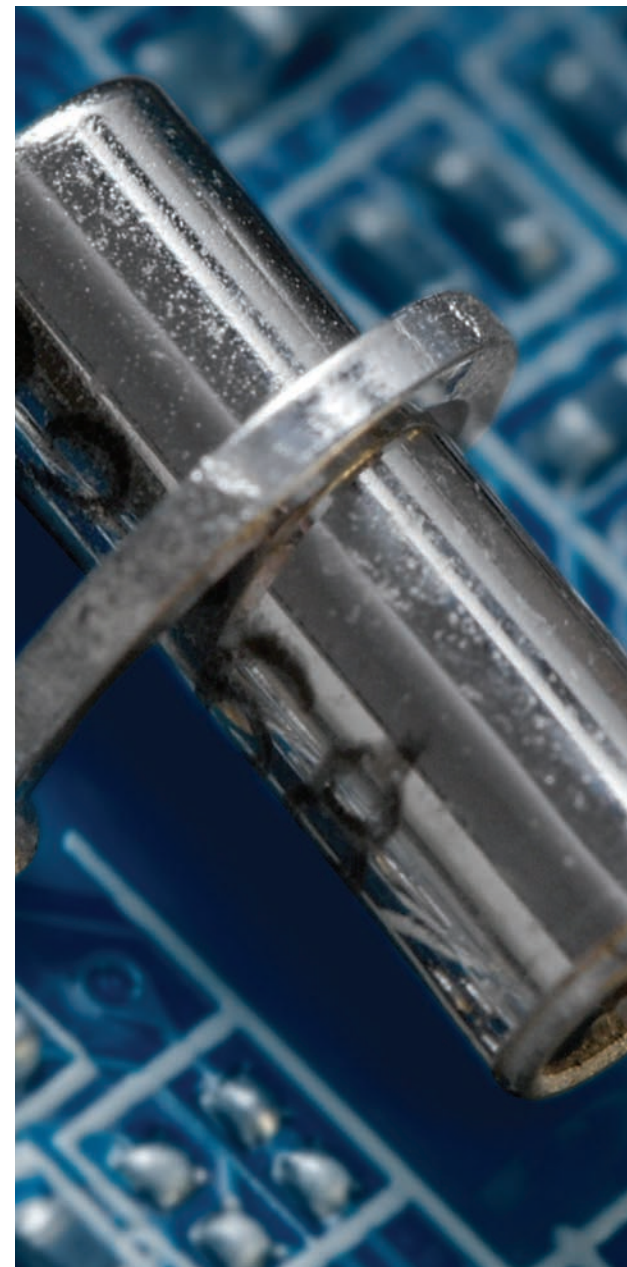


POTENTIOMETERS TRIMMERS	Bourns	Honeywell	OHMITE	Panasonic	TE Connectivity	TT Electronics - BI Technologies	Vishay	Vishay - Dale	Vishay - Sfernice	Vishay - Spectrol	Vishay Precision Group
TRIMMING POTENTIOMETERS											
Adjustment Tools	◆						◆		◆	◆	◆
Carbon	◆										
Cermet	◆		◆								
Counters			◆								
Multi-Turn	◆										
Open Frame	◆										
Sealed Frame	◆										
Single-Turn	◆		◆								
Wirewound	▲		◆				◆		◆	◆	◆
PRECISION PANEL CONTROL											
Carbon	◆						◆				
Cermet	◆	◆						◆	◆	◆	◆
Conductive Plastic		◆									
Dials/Knobs	◆		◆				◆	◆	◆	◆	◆
Knobs	◆		◆				◆	◆	◆	◆	◆
Hybrid	◆						◆				
Linear	◆		◆				◆	◆	◆	◆	◆
Metal Foil											◆
Modular							◆	◆	◆	◆	◆
Motor Pot							◆	◆	◆	◆	◆
Multi-Turn	◆						◆	◆	◆	◆	◆
Non-Linear							◆	◆	◆	◆	◆
Open Frame Slide	◆										
Rheostat			◆					◆	◆	◆	◆
Rotary	◆	◆	◆	◆			◆	◆	◆	◆	◆
Sealed Frame	◆		◆				◆	◆	◆	◆	◆
Single-Turn	◆		◆				◆	◆	◆	◆	◆
WIREWOUND											
SENSOR/ENCODER											
Attenuator						◆			◆		
Encoders	◆	◆					◆	◆	◆	◆	◆
Linear Motion	◆										
Rotary	◆	◆	◆				◆	◆	◆	◆	◆

NETWORK	Bourns	EATON	KOA Speer	Panasonic	TE Connectivity	TT Electronics - IRC, Welwyn	Vishay	Vishay - Dale	Vishay - Sfernice	Vishay - Thin Film	Vishay Precision Group	YAGEO
Array	◆		◆	◆	◆	◆	◆	◆	◆	◆	◆	◆
Conformal Coated	◆		◆	◆	◆	◆	◆	◆	◆	◆	◆	◆
Custom	◆		◆		◆	◆	◆	◆	◆	◆	◆	◆
Integrated Passive	◆		◆		◆	◆	◆	◆	◆	◆	◆	◆
Ladder							◆	◆	◆	◆	◆	◆
Line Protection	◆	◆					◆	◆	◆	◆	◆	◆
Molded	◆		◆				◆	◆	◆	◆	◆	◆
Resistor/Capacitor	◆	◆					◆	◆	◆	◆	◆	◆
SMT	◆	◆	◆	◆	◆	◆	◆	◆	◆	◆	◆	◆
Surge	◆	◆					◆	◆	◆	◆	◆	◆
Thick Film DIP	◆						◆	◆	◆	◆	◆	◆
Thick Film SIP	◆						◆	◆	◆	◆	◆	◆
Thin Film DIP	◆	◆					◆	◆	◆	◆	◆	◆
Thin Film SIP	◆						◆	◆	◆	◆	◆	◆

◆ Lead & Lead-free compliant parts available ◆ Lead-free only parts available ▲ Lead-only compliant parts available

TANTALUM	KEMET	KYOCERA AVX	Panasonic	Vishay
Conformal Coated Chip		◆		◆
Dipped Radial	◆	◆		◆
Fail Safe/ Fused Chip	◆	◆		◆
Hermetic Through Hole	◆	◆		◆
High-Temperature Chip	◆	◆		◆
Low ESR Chip	◆	◆		◆
Low Profile Chip	◆	◆		◆
Micro-Chip	◆	◆		◆
Molded Chip	◆	◆		◆
Molded Through Hole	◆			◆
Niobium Chip		◆		◆
Polymer Chip	◆	◆	◆	◆
Solid Metal Case Through Hole	◆			◆
Supertan				◆
Wet Through Hole				◆



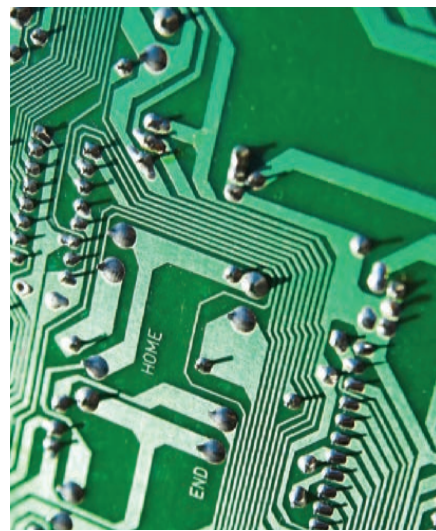
ALUMINUM	Barker Microfarad (BMI)	Cornell Dubilier - Illinois Capacitor	EATON	KEMET	KYOCERA AVX	Murata	Nichicon	Panasonic	TDK - EPCOS	United Chemi-Con	Vishay - BCcomponents
AC Motor Start	◆	◆		◆							
Axial Electrolytic	◆	◆		◆				◆		◆	◆
EDLC/Supercapacitor		◆	◆	◆	◆			◆		◆	◆
Flatpack Electrolytic		▲		◆							
Polymer		◆		◆	◆	◆	◆	◆		◆	◆
Radial Miniature	◆	◆		◆			◆	◆		◆	◆
Screw Terminal				◆						◆	◆
Snap-In		◆		◆						◆	◆
Surface Mount	◆		◆	◆	◆	◆	◆	◆	◆	◆	◆

FILM & MICA	Cornell Dubilier	EATON	KEMET	KYOCERA AVX	Nichicon	Panasonic	TDK - EPCOS	Vishay	Vishay - BCcomponents	Vishay - Roederstein	Vishay - Roederstein
FILM											
Motor Run		◆		◆					◆		
Polyester		◆		◆					◆		
Polypropylene		◆		◆					◆	◆	◆
Power Film		◆	◆	◆					◆	◆	◆
Snubber		◆		◆					◆	◆	◆
Suppression X-Y (Safety Cap)		◆	◆	◆					◆	◆	◆
Surface Mount		◆		◆					◆	◆	◆
MICA											
Metal Clad		◆									
Mica		◆									
Surface Mount		◆									

CERAMIC	ATC (American Technical Ceramics)	Cornell Dubilier	CTS - Tusonix	KEMET	Knowles - Syfer, Novacap, DLI	KYOCERA AVX	Murata	Spectrum Control	TAIYO YUDEN	TDK	Vishay	Vishay - BCcomponents	Vishay - Ceramite	Vishay - Roederstein	Vishay - Vitramon	United Chemi-Con	YAGEO
Arrays	◆			◆	◆	◆	◆	◆	◆	◆	◆	◆	◆	◆	◆	◆	◆
Dip 2-Pin				◆	◆	◆	◆	◆	◆	◆	◆	◆	◆	◆	◆	◆	◆
Disc		◆	◆	◆	◆	◆	◆	◆	◆	◆	◆	◆	◆	◆	◆	◆	◆
High Cap		◆	◆	◆	◆	◆	◆	◆	◆	◆	◆	◆	◆	◆	◆	◆	◆
High Q		◆	◆	◆	◆	◆	◆	◆	◆	◆	◆	◆	◆	◆	◆	◆	◆
High Temperature		◆	◆	◆	◆	◆	◆	◆	◆	◆	◆	◆	◆	◆	◆	◆	◆
High Voltage		◆	◆	◆	◆	◆	◆	◆	◆	◆	◆	◆	◆	◆	◆	◆	◆
Low Inductance		◆		◆	◆	◆	◆	◆	◆	◆	◆	◆	◆	◆	◆	◆	◆
Multi-Layer		◆	◆	◆	◆	◆	◆	◆	◆	◆	◆	◆	◆	◆	◆	◆	◆
RF/Microwave		◆		◆	◆	◆	◆	◆	◆	◆	◆	◆	◆	◆	◆	◆	◆
Safety				◆	◆	◆	◆	◆	◆	◆	◆	◆	◆	◆	◆	◆	◆
Single Layer	◆	◆		◆	◆	◆	◆	◆	◆	◆	◆	◆	◆	◆	◆	◆	◆
Switch Mode				◆	◆	◆	◆	◆									

PROTECTION DEVICES												
OVER CURRENT												
Automotive (Blade) Fuses												
Axial Fuses												
Cartridge Fuses												
NTC Thermistors												
Power (Electrical) Fuses												
PTC Thermistors												
Radial Leaded Resettable Fuses (PTC)												
Radial Subminiature Fuses												
Surface Mount Resettable Fuses (PTC)												
Surface Mount (125V+) Fuses												
Thermal Cutoffs (TCO)												
Thin Film (Chip) Fuses												
OVER VOLTAGE												
Gas Discharge Tube (GDT)												
Hybrid GDT/MOV												
Line Protection Networks												
Polymer ESD Suppression												
Protection Thyristors												
Surface Mount Varistors (MLV)												
Thermal MOV												
Through-Hole Varistors (MOV)												
TVS Diodes												
TVS Diodes Arrays												
FILTERS												
EMI /RFI												
RF Filters												
RF Wireless												
Amplifiers												
Antennas												
Attenuators												
Couplers												
EMI/RFI Filters												
Feed-Thru Filters												
Noise Suppression Sheets												
RF/Microwave Filters												
RF Module												
SAW Filters												
Surface Mount Filters												
MAGNETICS												
Ferrites												
Inductors												
Transformers												
Air Coil Inductors												
Common Mode Chokes												
Custom Inductors												
Ferrite Beads												
Ferrite Cores/Clamp Filters												
High-Current Inductors												
Leaded Inductors												
Multilayer Inductors												
Power Inductors												
RF Inductors												
Thin Film Inductors												
Toroid Inductors												
Transformers												
Wirewound/Coil Inductors												

● Lead & Lead-free compliant parts available ◆ Lead-free only parts available ▲ Lead-only compliant parts available



PIEZO FILM SENSORS		
Sound Devices		
Buzzer	●	●
Piezo	●	●
Receiver	●	●
Ringer	●	●
Sensor	●	●
Sounder	●	●
Speaker	●	●

THERMAL MANAGEMENT		
Extruded Heatsinks		
Liquid Coldplates		
Liquid Cooling		
Thermal Gap Filler/Paste		
Thermal Solutions Graphite Sheets		

TIMING DEVICES				
Frequency Control				
Crystals	●	●	●	●
Oscillators	●	●	●	●
Resonators	●	●	●	●
Tuning Forks	●	●	●	●
Precision Timing	●	●	●	●

POWER SUPPLIES				
AC/DC Power Supplies	◆	◆	◆	◆
DC/DC Power Converters	◆	◆	◆	◆
DC/AC Power Inverters	◆	◆	◆	◆

BACKPLANE												
BOARD-TO-BOARD												
DEVICE-TO-BOARD												

BACKPLANE												
10 Gb/s+ Solutions	◆	◆	◆	◆								
2.00 mm (.079 inch)	◆											
AOC Assemblies	◆											
Assemblies (Back-plane)	◆											
ATCA/MicroTCA	◆											
Cable Assemblies	◆	◆	◆	◆								
Card Edge	◆	◆	◆	◆								
Compact PCI	◆	◆	◆	◆								
DIN 41612 (Eurocard)	◆											
Fiber Optic	◆	◆	◆	◆								
Future Bus	◆											
Hard Metric	◆											
High-Speed Cable Assemblies	◆	◆	◆	◆								
PCI Express	◆	◆	◆	◆								
Power	◆	◆	◆	◆								
RF / Ganged RF												
SCA-2												
VPX (Ruggedized, Embedded)												

BOARD TO BOARD												
Ball Grid Array (BGA)	◆											
Battery Connectors												
Board Stacking	◆	●	◆	◆								
Breakaway Headers	◆	◆	◆	◆								
Compression	◆	◆	◆	◆								
Headers & Receptacles	◆	◆	◆	◆								
Mezzanine/FPC	◆											
Power	◆	◆	◆	◆								
SCSI	◆	◆	◆	◆								
Shunts	◆	◆	◆	◆								
Stacking	◆	◆	◆	◆								

DEVICE TO BOARD												
AOC Assemblies	◆											
DIMM												
DIP	◆	◆	◆	◆								
High-Speed Cable Assemblies	◆	◆	◆	◆								
PCMCIA	◆											
PGA	◆											
PLCC	◆											
Rambus												
RIMM/DIMM/SIMM												
SIP	◆											
Slot 1 & 2												
SO DIMM & RIMM												
Test /Burn-In Sockets	◆											
Transistor												

MEMORY CARD CONNECTORS							
CompactFlash™	◆	◆					
DDR/DDR2/Mini DDR2							
Express Card							
Full Size Card							
Memory Stick/Duo							
Micro SD							
Mini SD							
MMC							
PC Card/CardBus							
PCMCIA							
SD (Secure Digital)							
Smart Card (SAM)							
Smart Card (SIM)							
TransF							
xD							

CompactFlash™ is a trademark of the Compact Flash Association

RF/ COAXIAL/ MICROWAVE										
1.0 / 2.3										
1.6 / 5.6										
7 / 16										
BMA										
BNC (50/75Ω)										
BNC (Miniature)										
B to B Blindmate/Compression										
BSA										
FAKRA										
MCX/MMCX										
MHV/SHV										
Microwave Cable Assemblies										
Precision ¹										
QMA										
Reverse Polarity ²										
RF Cable Assemblies										
Shielded Terminators										
SMA										
SMB (50/75Ω)										
SMB (Miniature)										
SMC										
SMP										
SMT										
SSMA										
TNC										
Triax										
Twinax										
Type F/G										
Type N										
UHF/MiniUHF										

¹2.4 / 2.9 / 3.5 / 7mm
²BNC, MMCX, N, SMA, TNC

POWER SEMICONDUCTORS		Bourns	Littelfuse - IXYS	Littelfuse - Teccor	KYOCERA AVX	Nexperia	ROHM Semiconductor	Toshiba	TT Electronics - Semelab	Vishay	VPT Components
DIODES											
Arrays		◆	◆		◆	◆	◆	◆	◆	◆	◆
Schottky			◆		◆	◆	◆	◆	◆	◆	◆
Small Signal		◆			◆	◆	◆	◆	◆	◆	◆
TVS		◆		◆	◆	◆	◆	◆	◆	◆	◆
Zener		◆			◆	◆	◆	◆	◆	◆	◆
Silicon Carbide (SiC)		◆	◆	◆	◆	◆	◆	◆	◆	◆	◆
RECTIFIERS											
Bridge		◆	◆			◆				◆	
Rectifiers		◆	◆	◆		◆	◆	◆	◆	◆	◆
Schottky		◆	◆	◆	◆	◆	◆	◆	◆	◆	◆
THYRISTORS											
Protection		◆	◆								
Switching (SCRs, Triacs)		◆	◆								◆
TRANSISTORS											
Bipolar					◆	◆	◆	◆	◆		◆
Small Signal					◆	◆	◆	◆	◆		◆
IGBTs											
Discrete		◆	◆		◆	◆					
Modules			◆						◆	◆	
MOSFETs											
Gallium Nitride (GaN)					◆	◆					
High-Voltage			◆			◆	◆	◆	◆		
Low-Voltage			◆		◆	◆	◆	◆	◆		
Modules			◆		◆	◆	◆	◆	◆		
Silicon Carbide (SiC)		◆			◆	◆	◆	◆	◆		

ADDITIONAL DISCRETE COMPONENTS		Littelfuse - IXYS	Nexperia	ROHM Semiconductor	Toshiba	TT Electronics - Semelab	Vishay
Analog Switches		◆	◆	◆	◆		◆
LDO (Low Drop Out) Voltage Regulator				◆	◆		◆
Logic			◆	◆			
Motor Control Drivers				◆			◆
RF Diodes			◆	◆	◆	◆	◆
RF Transistors			◆	◆	◆	◆	◆
Voltage Regulators		◆	◆	◆			◆

◆ MIL Spec Discretes (DSCC)

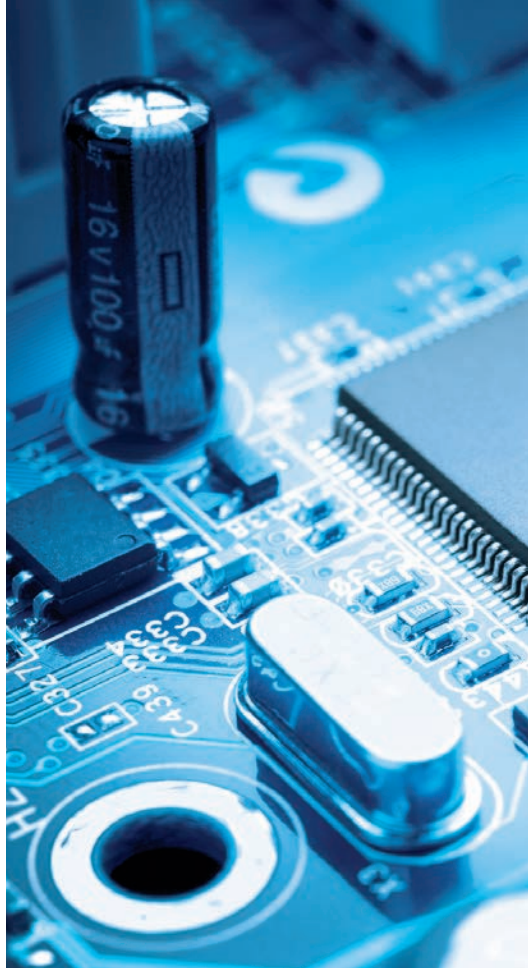
MEMORY		ROHM Semiconductor	TDK
CompactFlash™, CFast™			◆
DRAM			◆
SD Memory Cards			◆
Serial EEPROM			◆
Solid State Drives (SSD)			◆

OPTOELECTRONICS		ams OSRAM	Cree LED	Dialight	Kingbright	KYOCERA Display	Littelfuse - IXYS	Nexperia	ROHM Semiconductor	Toshiba	TT Electronics - OPTEK	Vishay
High-Voltage Isolators											◆	◆
Infrared Emitters		◆			◆							◆
Infrared Sensors/Receivers		◆			◆							◆
LCD Modules												◆
LEDs - Indication		◆	◆	◆	◆				◆		◆	◆
LEDs Illumination <1W		◆	◆	◆	◆				◆		◆	◆
LEDs - Illumination >1W		◆	◆									◆
LEDs - UV		◆										◆
LED Displays					◆	◆						◆
LED Drivers								◆	◆	◆		◆
LED Modules		◆			◆							◆
Light Pipes				◆								◆
OLED Displays												◆
Optical Sensing		◆							◆		◆	◆
Optocouplers					◆		◆			◆	◆	◆
Panel Mount Indicators			◆				◆					◆
Solid State Relays							◆		◆			◆
TFT Displays				◆								◆



ANTENNAS			Abracon	Amphenol	Spectrum Control	KYOCERA AVX	Murata	Pulse/YAGEO	TDK	TE Connectivity	
Application	Type	Frequency (MHz)									
GPS	Chip*	1575	◆			◆	◆	◆	◆	◆	
		1500-1600	◆			◆	◆	◆	◆	◆	
		1227.6/1176 (L2/L5)	◆			◆	◆	◆	◆	◆	
	Passive Patch	1227	◆		◆	◆					◆
		1575	◆			◆	◆	◆		◆	
		1575/1598-1606	◆	◆			◆	◆			◆
		1592 Inmarsat			◆	◆					◆
		1615 Globalstar			◆	◆					
		1621 Iridium	◆		◆	◆					
		2338 SDARS	◆			◆	◆				
		1227.6/1176 (L2/L5)	◆			◆	◆	◆		◆	◆
		1176	◆			◆	◆	◆		◆	◆
		558-1610	◆	◆			◆	◆			
	FPC/PCB	Internal Active w/cable	1575/1592-1610	◆	◆		◆	◆	◆		◆
			1575	◆	◆		◆	◆		◆	◆
External Active w/cable		1575/1594-1610	◆	◆		◆	◆	◆		◆	
		1164-1610	◆			◆	◆	◆		◆	
		1575	◆	◆		◆	◆	◆		◆	
Combo	External	1575	◆	◆		◆	◆	◆		◆	
		1575/2400	◆	◆		◆	◆	◆		◆	
	GPS + WiFi	1575/2400	◆	◆		◆	◆	◆		◆	
	GPS + Dual WiFi	1575/1602 2400/5000	◆	◆		◆	◆	◆		◆	
	Ext Active Cellular + GPS	Multiple	◆	◆		◆	◆	◆		◆	
RFID	External Cellular + GPS	Multiple	◆	◆		◆	◆	◆		◆	
		Multiple	◆	◆		◆	◆	◆		◆	
	NFC Tag	13.56	◆			◆	◆				
	On Metal RFID Tags	902-928	◆			◆	◆				
	RFID Tag Antenna	865-928	◆			◆	◆				
RFID Reader Antenna	868, 915	◆	◆		◆	◆	◆		◆		
ISM	Chip*	169						◆		◆	
		315					◆		◆		
		433		◆			◆	◆		◆	
		868		◆			◆	◆		◆	
		915		◆		◆	◆	◆		◆	
	FPC/PCB	433				◆		◆		◆	
		868		◆		◆	◆	◆		◆	
		915		◆		◆	◆	◆		◆	
		915		◆		◆	◆	◆		◆	
	Outdoor	433		◆	◆			◆		◆	
		868		◆	◆		◆	◆		◆	
		915		◆	◆		◆	◆		◆	
WiFi/Bluetooth/BLE/ZigBee	Chip*	2400				◆	◆	◆	◆	◆	
		5000				◆	◆	◆	◆	◆	
		Dual Band WiFi				◆	◆	◆	◆	◆	
	FPC/PCB	Tri-Band WiFi (2400/5000/6000)					◆				
		2400		◆	◆		◆	◆	◆	◆	
		5000		◆	◆		◆	◆	◆	◆	
	External	Dual Band WiFi		◆	◆		◆	◆	◆	◆	
		Tri-Band WiFi (2400/5000/6000)					◆			◆	
		2400		◆	◆		◆	◆	◆	◆	
		5000		◆	◆		◆	◆	◆	◆	
		Dual Band WiFi		◆	◆		◆	◆	◆	◆	
		Tri-Band WiFi (2400/5000/6000)		◆	◆		◆	◆	◆	◆	
	Outdoor	2400		◆	◆		◆	◆	◆	◆	
		5000		◆	◆		◆	◆	◆	◆	
		Dual Band WiFi		◆	◆		◆	◆	◆	◆	
Wireless Charge Coil	Tx	2400				◆	◆	◆		◆	
		5000				◆	◆	◆		◆	
		Tri-Band WiFi (2400/5000/6000)		◆	◆		◆	◆	◆	◆	
Rx	2400					◆	◆	◆			
	5000					◆	◆	◆			

ANTENNAS			Abracon	Amphenol	Spectrum Control	KYOCERA AVX	Murata	Pulse/YAGEO	TDK	TE Connectivity	
Application	Type	Frequency (MHz)									
Cellular	Chip*	698-960	◆			◆	◆	◆	◆	◆	
		1710-2690	◆			◆	◆	◆	◆	◆	
		2500-2700	◆			◆	◆	◆	◆	◆	
		PentaBand	◆			◆	◆	◆	◆	◆	
		Octaband	◆			◆	◆	◆	◆	◆	
		698-960	◆	◆		◆	◆	◆	◆	◆	◆
	FPC/PCB	1710-2690	◆	◆		◆	◆	◆	◆	◆	◆
		2500-2700	◆	◆		◆	◆	◆	◆	◆	◆
		PentaBand	◆	◆		◆	◆	◆	◆	◆	◆
		Octaband	◆			◆	◆	◆	◆	◆	◆
		698-960	◆	◆		◆	◆	◆	◆	◆	◆
		1710-2690	◆	◆		◆	◆	◆	◆	◆	◆
	Outdoor	2500-2700	◆	◆		◆	◆	◆	◆	◆	◆
		PentaBand	◆	◆		◆	◆	◆	◆	◆	◆
		Octaband	◆			◆	◆	◆	◆	◆	◆
		698-960	◆	◆		◆	◆	◆	◆	◆	◆
		1710-2690	◆	◆		◆	◆	◆	◆	◆	◆
		2500-2700	◆	◆		◆	◆	◆	◆	◆	◆
	Vehicular	PentaBand	◆	◆		◆	◆	◆	◆	◆	◆
		Octaband	◆			◆	◆	◆	◆	◆	◆
		698-960	◆	◆		◆	◆	◆	◆	◆	◆
		1710-2690	◆	◆		◆	◆	◆	◆	◆	◆
		2500-2700	◆	◆		◆	◆	◆	◆	◆	◆
		PentaBand	◆	◆		◆	◆	◆	◆	◆	◆
	5G	Multiple Types	Multiple	◆			◆	◆	◆	◆	◆



*SMD/MT

*SMD/MT

● Lead & Lead-free compliant parts available ◆ Lead-free only parts available ▲ Lead-only compliant parts available

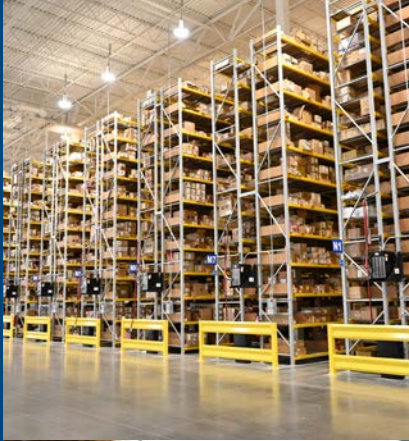


The IP&E Specialist

Why Buy from the Specialist in Electronic Component Distribution?

Founded in 1971, TTI has steadily grown to become the world's leading interconnect, passive, electromechanical and discrete component distributor in the industry.

The company was founded on the premise that passive component purchasing could be made more efficient by offering product specialization, customer-driven service, and proprietary supply chain solutions – and do it all with secure 24/7 access.



Knowledgeable Product Experts

Specialization allows TTI product managers to provide much better product insight to support your manufacturing from design through production. TTI Specialists' commitment to our customers is key to our continued success.

Broader and Deeper Inventories

TTI maintains extensive component inventories, stocking more than 500,000 part numbers in North America and over 850,000 globally – that's more interconnect, passive, electromechanical and discrete inventory available than from any other source.

AIM – Advanced Inventory Management Platform

TTI's proprietary supply chain system is specifically designed for managing IP&E products and partnerships with premier manufacturers. This allows us to provide the BOM coverage necessary to deploy comprehensive solutions that reduce total cost of ownership and mitigate line down risk.

QUALITY AND RELIABILITY

TTI is the first distributor to have all global warehouse locations ISO registered and currently are certified to ISO 9001 with AS9100C and ISO 14001 in North America, ISO 9001, EN 9100, ISO 14001 and EN 9120 in TTI Europe and ISO 9001 in TTI Asia.

Year after year, customers rate our inventory availability, on-time delivery and accuracy among the very best in the industry – call your local TTI Specialists at 1.800.CALL.TTI and discover why.

